

VENUE HIRE.

Parcel 110
September 2021

Document Type: Public



CONTENTS.

About

Small Studio

Standard Studio

Black Box

Meeting Room

Large Studio

Gallery

Dining Room

Library

Escape Rooms

Arts & Craft

Food & Beverage

Find Us

Fees and Invoicing

FAQ



ABOUT.

Parcel 110 offers a unique setting for corporate events, receptions, pop-ups, and private functions. We play host to a variety of flexible spaces for people to gather, collaborate, and create. Our multipurpose studios, meeting rooms, and urban-view gallery and bar are designed to serve content launches, gallery debuts, performance pieces, or social events.

Whatever you need, the experienced and imaginative Venue Hire team will be there to assist you in creating your perfect event.

Parcel 110 is a facilitator and sponsor of the arts in the Cayman Islands. By choosing our venue for your event, you are also supporting Parcel 110's educational and community programmes.

A creative venue.

A blank canvas.

A community forum.

An immersive destination.



SMALL STUDIO/ OFFICE

Capacities:

Classroom 8/ Boardroom 8

Size:

150 sq ft/ 13.9 sq m

Costs for Venue Hire:

\$50 per hour (minimum 2 hours)/ \$180 half day/ \$300 full day

Includes:

Venue Hire, Wi-Fi, Tables and Chairs, Flipchart, Step-Free Access



*Located on second floor.



STANDARD STUDIO.

Capacities:

Standing 20/ Banquet 14/ Theatre 20/
Classroom 18/ Boardroom 12

Size:

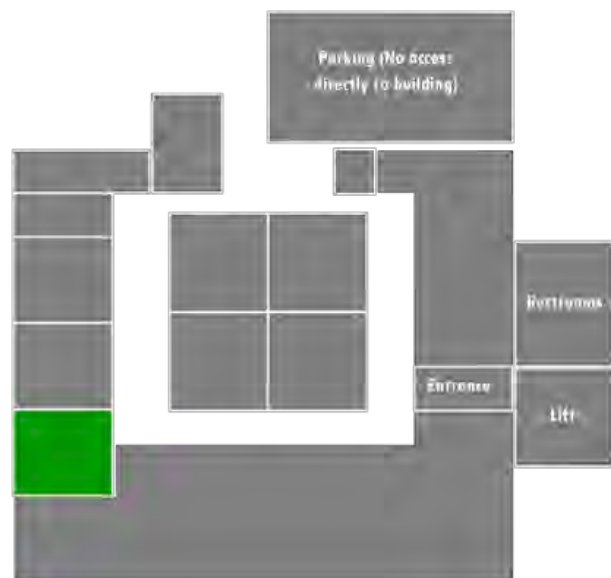
272 sq ft/ 25.3 sq m

Costs for Venue Hire:

\$75 per hour (minimum 2 hours)/ \$225
half day/ \$400 full day

Includes:

Venue Hire, Wi-Fi, Tables and Chairs,
Flipchart, Step-Free Access





BLACK BOX.

Capacities:

Standing 340/ Banquet 85/ Theatre
190/ Classroom 124

Size:

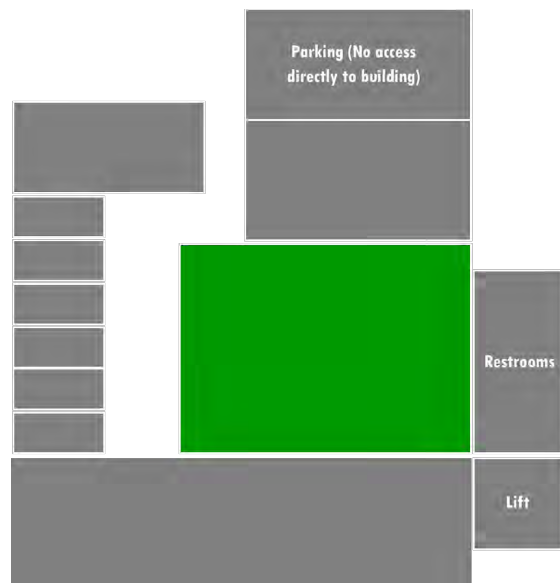
1690 sq ft/ 157 sq m

Costs for Venue Hire:

\$750 half day/ \$1,250 full day

Includes:

Venue Hire, Wi-Fi, Tables and Chairs,
Flipchart, Step-Free Access





MEETING ROOM.

Capacities:

Standing 45/ Banquet 38/ Theatre 45/
Classroom 30/ Boardroom 22

Size:

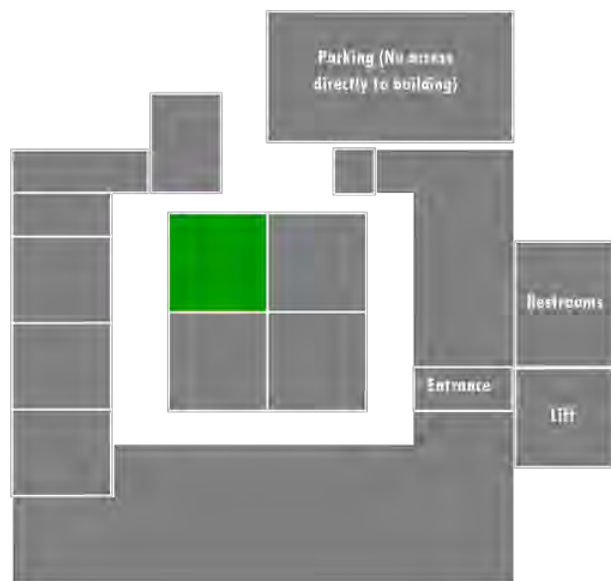
401 sq ft/ 37.3 sq m

Costs for Venue Hire:

\$100 per hour (minimum 2 hours)/
\$325 half day/ \$600 full day

Includes:

Venue Hire, Wi-Fi, Tables and Chairs,
Flipchart, Step-Free Access





CLASSROOM/ LARGE STUDIO.

Capacities:

Standing 45/ Banquet 38/ Theatre 45/
Classroom 28/ Boardroom 18

Size:

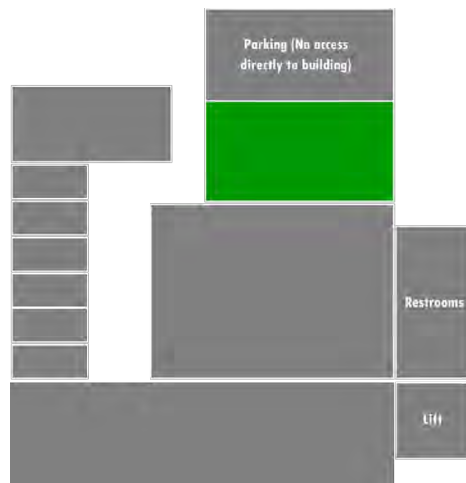
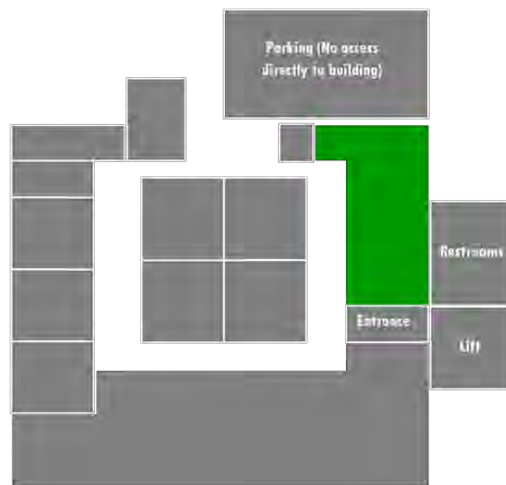
486 sq ft/ 45.2 sq m

Costs for Venue Hire:

\$190 per hour (minimum 2 hours)/
\$335 half day/ \$620 full day

Includes:

Venue Hire, Wi-Fi, Tables and Chairs,
Flipchart, Step-Free Access



Our Gallery hosts a rotating exhibition of pieces by Caymanian and international artists, ensuring a unique venue each time.



Gallery.

Capacities:

Standing 120/ Banquet 55/ Theatre 70/
Classroom 52/ Boardroom 30

Size:

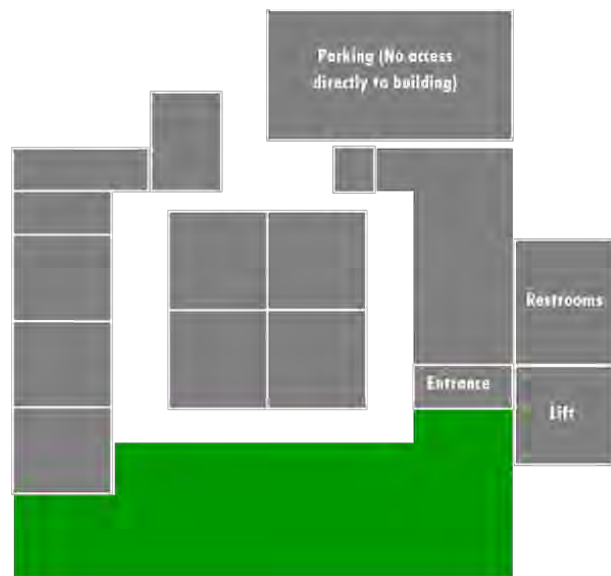
900 sq ft/ 83.6 sq m

Costs for Venue Hire:

\$540 half day/ \$900 full day

Includes:

Venue Hire, Wi-Fi, Tables and Chairs,
Flipchart, Step-Free Access





DINING ROOM.

Capacities:

Standing 340/ Banquet 85/ Theatre 190/ Classroom 124

Size:

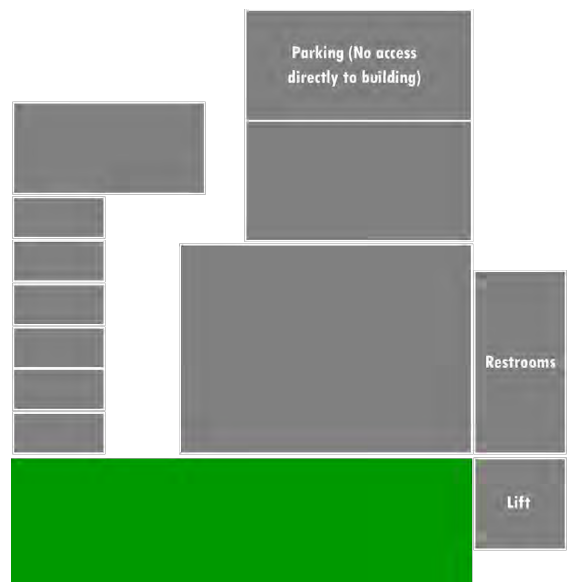
1690 sq ft/ 157 sq m

Costs for Venue Hire:

\$705 half day/ \$1,175 full day

Includes:

Venue Hire, Wi-Fi, Tables and Chairs, Flipchart, Step-Free Access





LIBRARY.

Capacities:

Standing 120/ Banquet 55/ Theatre 70/
Classroom 52/ Boardroom 30

Size:

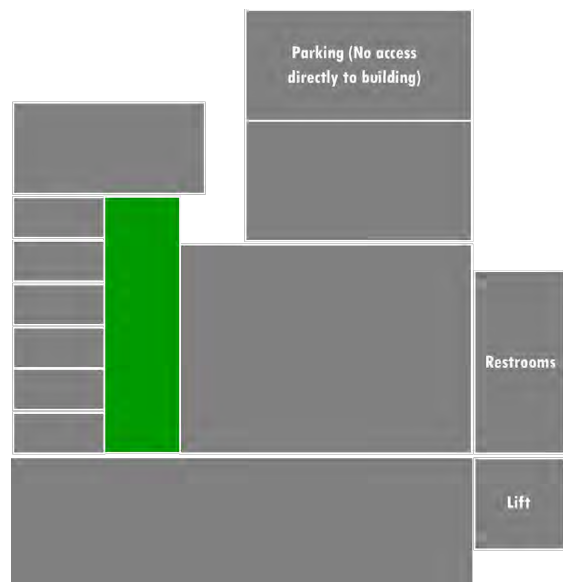
900 sq ft/ 83.6 sq m

Costs for Venue Hire:

\$525 half day/ \$875 full day

Includes:

Venue Hire, Wi-Fi, Tables and Chairs,
Flipchart, Step-Free Access





ESCAPE ROOMS.

Parcel 110 hosts 3 unique, Cayman-themed escape rooms by *Locked Inn Cayman* which provide an immersive distraction from meetings, plenary sessions, or lectures.

Themes:

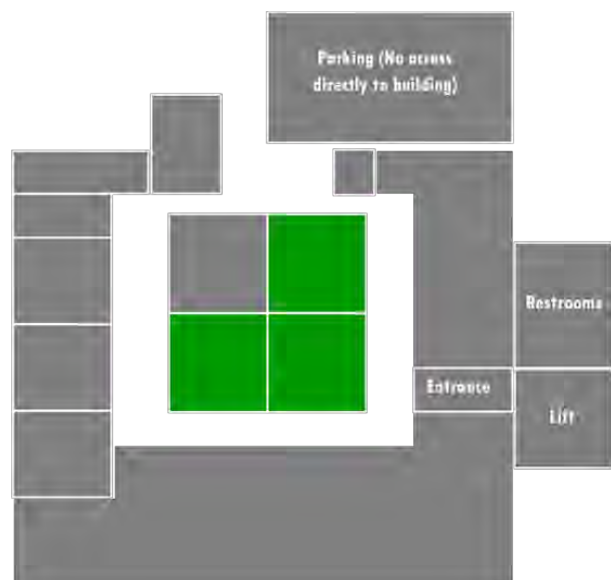
Prison Riot/ 1932/ Escape from the Kittiwake

Capacities:

8 guests per room, per hour

Costs:

\$25 per guest (with same day venue rental)/ \$32 per guest (without venue rental)





ART & CRAFT.

In partnership with Art Nest Creative Studio, we offer a range of art and craft activities to compliment your corporate team building, leadership training, or social day. These can be booked directly with Parcel 110, and include:

- Acrylic painting;
- Fluid art;
- Craft decorating;
- Pottery and ceramics;

And more!

Prices begin at \$20 per person.





FOOD & BEVERAGE

Parcel 110 offers guests the best of Cayman's catering and bar services in partnership with our preferred local vendors.

Whether you're looking for canapés or a complete multi-course private meal with wine pairings, our full service caterers can provide you with the local flavours you need.

All catering must be organised directly with Parcel 110's venue hire team.

Catering Services:

- Cayman Cabana
- Champion House II
- Tomfoodery Kitchen

Bar Services:

- Exit Strategy Limited

Cost:

Starting at \$10 per guest



FIND US.

Taxi – All local taxi drivers will be able to bring you directly to our front door on Cardinall Avenue. We are located in the same building as Victoria’s Secret, with our main entrance on the right next to Penha.

Public Bus – We are located a 2 to 3 minute walk from the public bus terminus. Walk south on Edward Street (towards the central post office), and take a right on Cardinall Avenue. Our main entrance is on the left, between Penha and Sterling & Stone.

Parking – Parcel 110 has dedicated on-site parking on the second level of our building’s parking structure. Vehicular access is from Shedden Road, with the ramp located on the right hand side just before the FedEx Ship Centre. Street parking is also available on the streets surrounding Parcel 110, and we encourage our guests to take a short stroll through the area and visit other small businesses!



FEES AND BILLING.

Parcel 110 is a full service events partner, and we strive to make the event planning process as simple and stress-free as possible. We will act as a single vendor for your event, and our invoice may include the following items: venue hire, cleaning, security, catering, beverage charges, moving surcharges, audio visual rentals, and service fees.

Our fees are completely transparent, and we will pass on any fees from third party vendors without any mark-up.

Each event is unique, and your dedicated events administrator will review all expected charges before you even sign a venue hire agreement.

You can expect an easy, hassle-free, and completely transparent invoice from us. And what's even better is that our venue provides one the best value options in the Cayman Islands.

FAQ.

We want to use a different caterer. Is that possible?

Parcel 110 has entered into preferred vendor agreements with a some of Cayman's best caterers, who can provide a wide range of services. Unfortunately, we can't accommodate services from other vendors.

Can we use our own bartending service or provide our own alcohol?

Parcel 110 is a fully licensed premise and we offer a full bar and beverage service for every occasion. In order to ensure we meet the high standards expected of a fully licensed premises, we do not allow external bartending services or outside alcohol.

Can we move the furniture?

With enough advance notice, we would be happy to rearrange or remove the furniture. This will attract an additional fee, as a professional service is required to rearrange or remove furniture.

Will you provide all chairs and tables?

We do have a small selection of chairs and tables, however for large events we can engage the services of one of our preferred vendors.

How far in advance do I need to book?

Every event is unique, and sometimes an amazing experience can be arranged at the drop of a hat. We'd love some notice though, as do external vendors, so we typically ask that you secure the venue for your event at least 14 days in advance.

Is a deposit required to secure a particular space or date?

Yes, a deposit of 50% of the expected final invoice must be paid in order to reserve a particular date and space.

How late can our event continue?

Parcel 110 can remain open for your event until 2:00 AM every day except Saturdays, when we must close by 12:00 midnight.

VENUE HIRE.

**Parcel 110
3rd Floor, Royal Plaza
40 Cardinal Avenue
George Town
Grand Cayman**

**Tel: 345 525 8820
Email: info@parcel110.ky
Web: www.parcel110.ky**